

Violoncello

Metamorphosen

Volkmar Fritsche

Tempo quasi Andante, Dynamik quasi piano

26 **Largo** 4

30 **a tempo (Andante)**

ppp

4

ppp

32 3 35 Largo 3

③⑨ Scherzando (♩=ca.180)

44 *pizz.* **(45)**
p

(47) *arco*
poco a poco cresc.

53 **(55)**
f

58 **(59)**

(63)

(65) *ff* **2**

(70) **3** **(73)** *un poco lento*
espr. *p*

(75) *ancora più lento*

79 **(81)** *Feroce* $\text{♩} = \text{ca. } 106$
Allegro, ma non troppo
sempre stacc.
pp *ppp* *f*

82



85



88



92



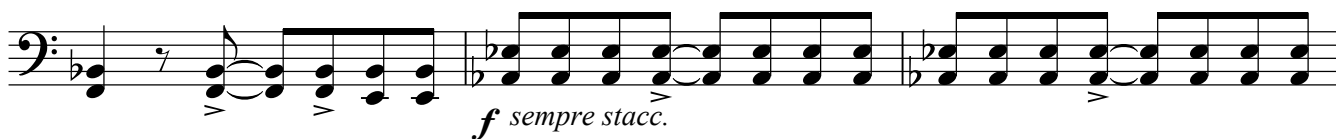
96



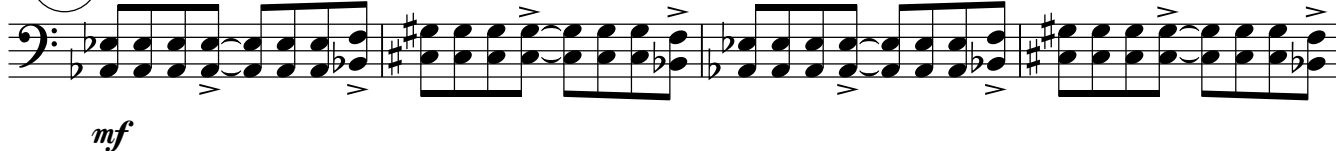
100



103



106



110



112

un poco lento e elegico

114



118



121



125

poco a poco diminuendo*mf*

128



133

un poco lento e molto espressivo

138

140

espr.

143



148



152

mf *p*

156

mf *f*

160

f

164

mp *mp*

169

f *pp* *molto rit.*

173 *Larghetto*

ppp

178

p

183

mp *mf*

190

pp *mp*

199

mf

205

f pizz.

211

ff *arco* *f pizz.*

217

mf *arco*

222 rit. 223 tempo corrente

f *pizz.* *mf*

226

pp

231

f arco

235 (continuare tempo corrente e accel.)

p *espr.* *pp*

239

pp

Feroce Tempo I

243 Allegro ma non troppo
sempre stacc.



250

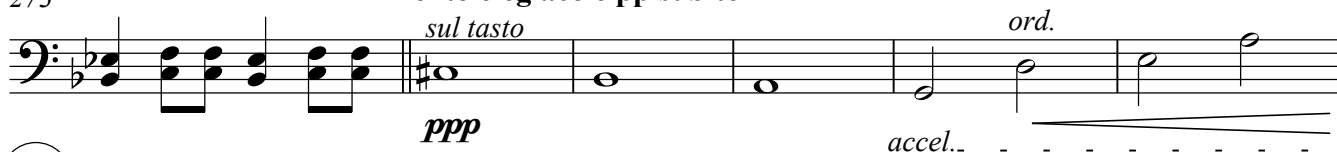


269



273

Lento elegiaco e pp subito



279 a tempo I (♩=106) molto espressivo



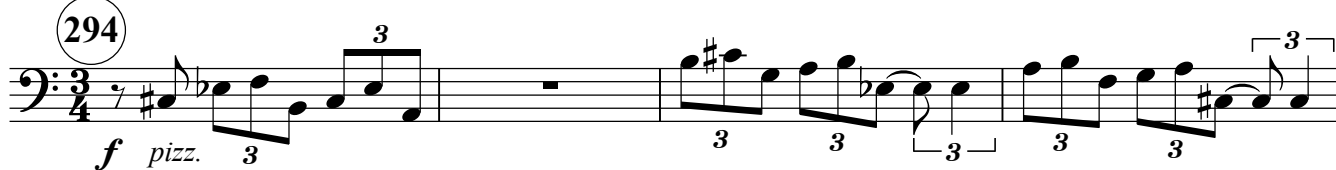
283



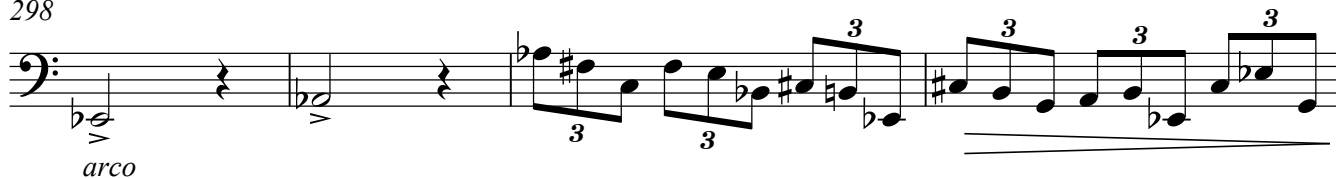
288



294



298



302

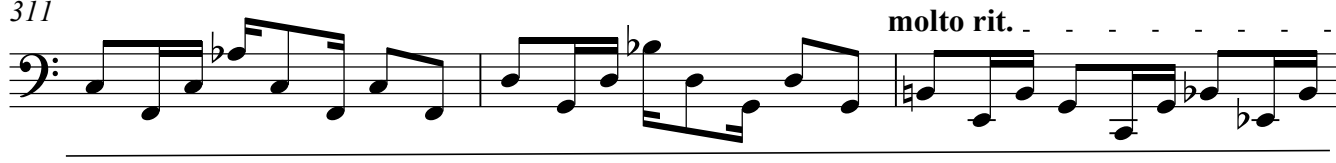
tempo mosso
un poco scherzando



307



311



314

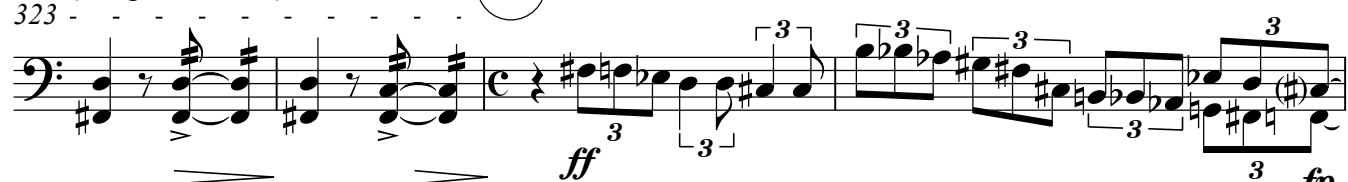
315


a tempo


rit.




(sempre ritenuto) 325

323 

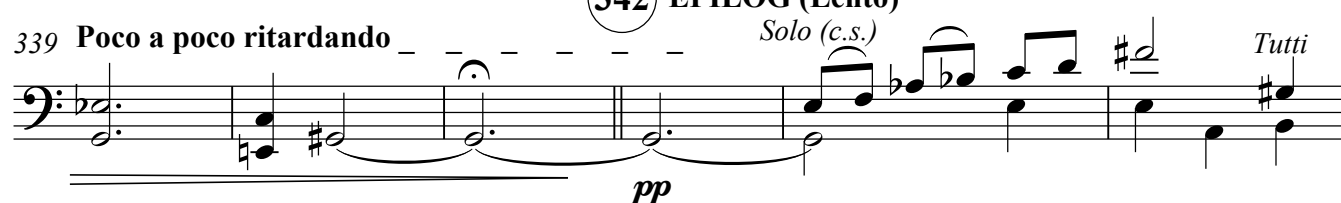
327 **Allegro** 

330 

334



342 **EPILOG (Lento)**

339 **Poco a poco ritardando** 

Solo (c.s.) *Tutti*

345 

350



356 *à 2* *Solo*



con sord.

363 